

# FOR SALE/LEASE

**PRICE  
REDUCED!**



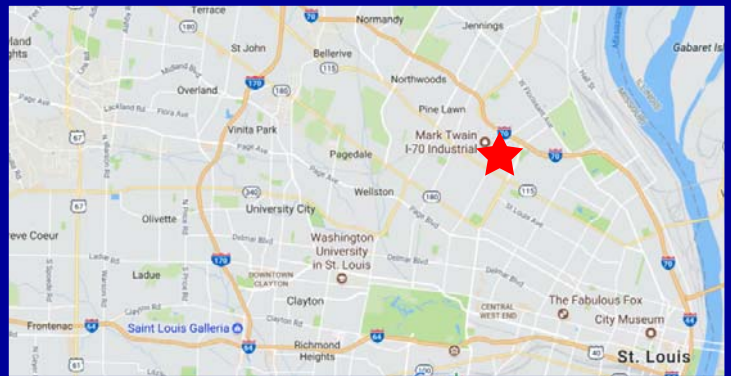
**4001 N. Kingshighway Boulevard  
St. Louis, MO 63115**

## **Property Highlights:**

- **±75,405 SF office and warehouse distribution center**
- **±5,000 SF primary front office space with separate entrance**
- **±3,100 SF back office mezzanine**
- **±4.67-acre site**
- **Ample surface parking with 40 parking spaces**
- **Dock-high access with 9 dock doors**
- **Two (2) ramped drive-in doors**
- **Minimal SF at 12' , majority at 21' clear ceiling heights**
- **Fully wet-sprinklered**
- **Fenced lot**
- **Zoned K - Unrestricted**
- **R.E. Taxes: 2016 \$50,821**
- **Extremely well-maintained facility located in North St. Louis City**
- **Excellent visibility**
- **Easy access to I-70**

**FOR SALE: ~~\$1,735,000~~  
\$1,600,000**

**FOR LEASE: ~~\$2.75~~ \$2.50 psf,  
NNN**



For more information call  
(314) 862-3000, ext. 115  
Daniel W. Johnson  
dwjohnson@j-group.com

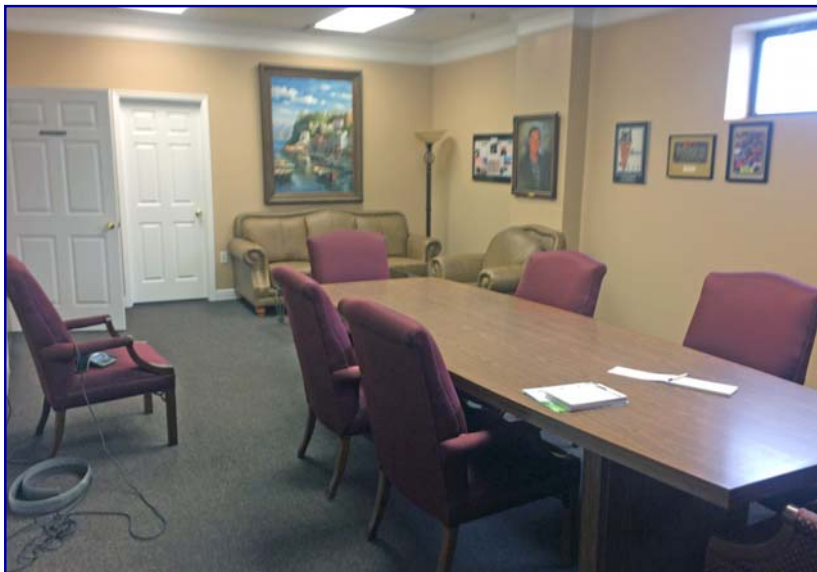
## **Johnson Group**

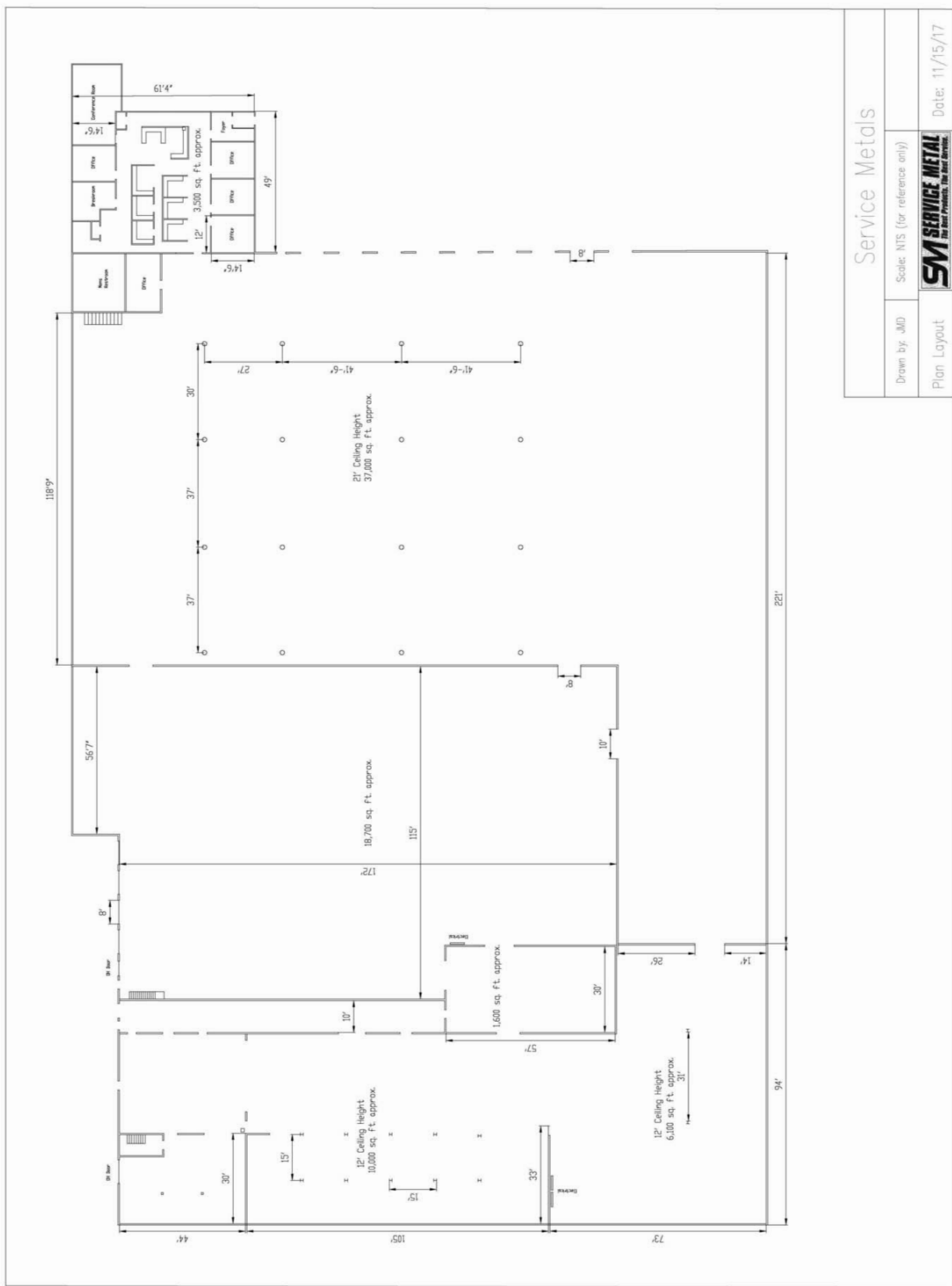
1714 Deer Tracks Trail, Suite 100  
St. Louis, Missouri 63131  
(314) 862-3000/fax (314) 862-1307  
www.j-group.com



Information contained herein has been obtained from the owner of the property or from other sources deemed reliable; however, Broker does not guarantee the accuracy or completeness of this information. Broker cannot guarantee the suitability of these premises for the ultimate purchaser's or lessee's intended use or investment. Owner and Broker make no representation as to the environmental or other condition of the property and recommend that prospective purchaser or lessee investigate fully.

**4001 N. Kingshighway Boulevard**  
**±75,405 sq. ft.**





## Service Metals

Drawn by: JMD	Scale: NTS (for reference only)
Plan Layout	Date: 11/15/17

